



passion for sports grounds

SMG Sportplatzmaschinenbau GmbH

Robert-Bosch-Str. 3, DE - 89269 Vöhringen / Germany

Phone: +49 (0) 7306 96 65 0

Fax: +49 (0) 7306 96 65 50

E-mail: info@smg-machines.com

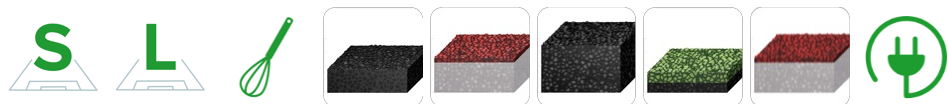


MixMatic - Mixing
MixMatic M1202D



MixMatic - Mixing

MixMatic M1202D



Item number/s:

6400077

Batch mixer for binder, rubber granules and gravel.

Option: charging vat.

Materials for sports surfaces, such as granulate, gravel, cork and PU-coating are homogeneously mixed by the MixMatic M1202. The M1202 is also ideal for industrial floors, e.g. for cementbound floor screeds or epoxy resin floor coverings.

The robust construction of the machines is designed to withstand the extremely tough conditions of non-stop work on job sites. Thus, the low filling lever for loading and the strong lifting hydraulics for the speedy discharging of the mixed material turn out to be key benefits. Extremely intensive mixing of the materials shortens mixing cycles. Using an extra charging vat (optional) can expedite the mixing process. The basic mixer lifting hydraulics facilitate the loading.

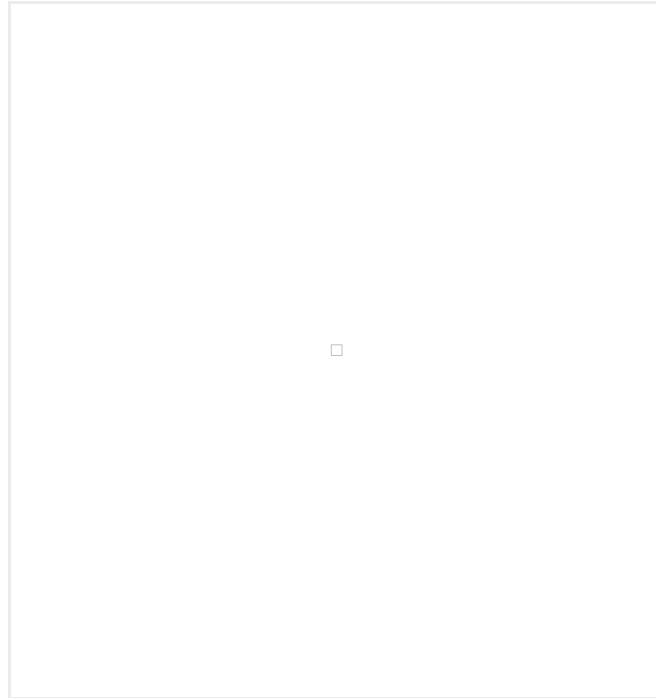
MixMatic - Mixing

MixMatic M1202D

Detail views



MixMatic M1202D



Safety

Support legs ensure a safe stand.



Proven

Container emptying in all standard dumpers.

MixMatic - Mixing

MixMatic M1202D

Detail views



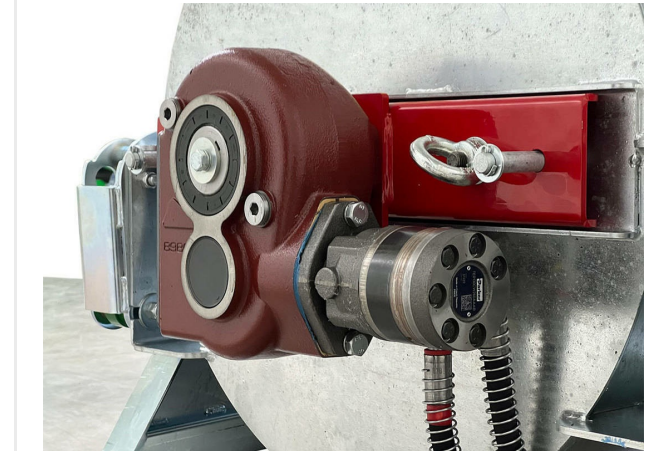
Reliable

Kubota Control Box with control elements.



Protected

Steering elements protected under the engine hood.



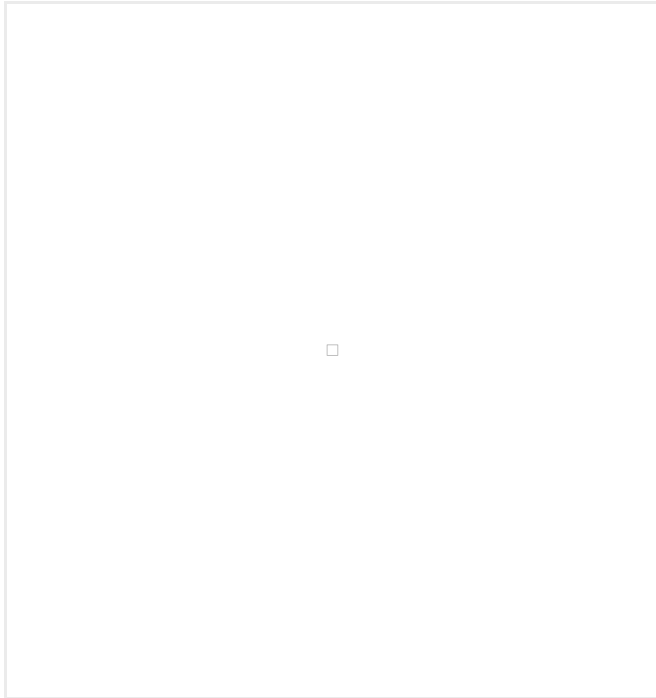
Powerfull

Hydraulic motor and gear for high mixing performance.

MixMatic - Mixing

MixMatic M1202D

Detail views



Process reliability

Material container and adjustable mixing paddle for homogenous mixing.



Optional

Charging vat for rational charging of materials.

MixMatic - Mixing

MixMatic M1202D

Technical information

Drive	M1202 D: diesel engine 14,9 kW (20,2 HP) M1202 E: electric motor 8 kW (10,9 HP) / 400 V / 50 Hz / 15 A
Electrical equipment	Compact control in a housing protected against spraying water; with switch for changing the direction of turn
Mixing capacity	150 kg/2 min
Mixer drive	Hydraulic aggregate with tank, pump, oil cooler, control valve, main control block, level indicator with thermometer. Pump and oil cooler driven by the motor via twin V-belts, tank capacity 45 litres.
Weight	M1202 D: 650 kg M1202 E: 550 kg
Dimensions	L 2,300 x W 1,000 x H 1,100 mm

Shipping dimensions

L 2,380 x W 1,140 x H 1,350 mm

Subject to technical changes



passion for sports grounds

SMG Sportplatzmaschinenbau GmbH | Robert-Bosch-Str. 3, DE - 89269 Vöhringen / Germany | Phone: +49 (0) 7306 96 65 0
Fax: +49 (0) 7306 96 65 50 | info@smg-machines.com | www.smg-machines.com